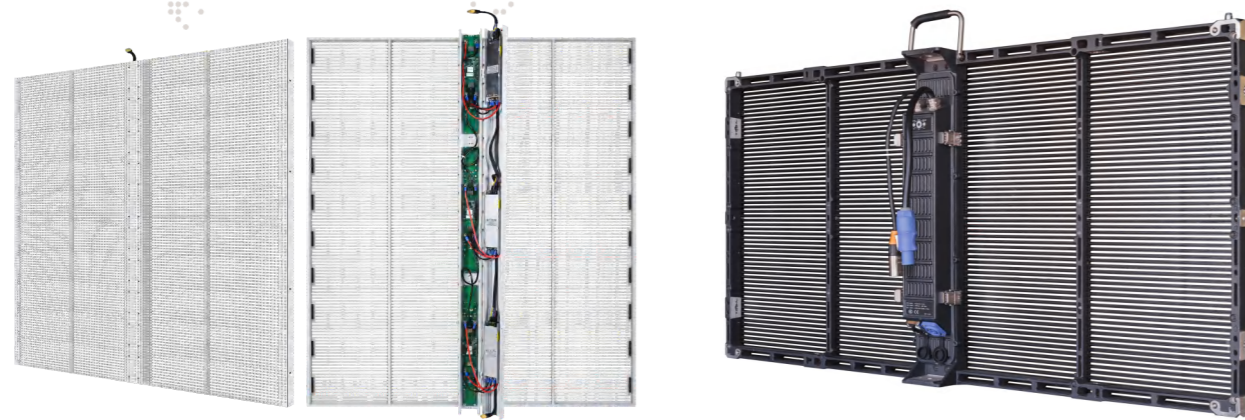


PRODUCT INTRODUCTION

A-B CHIP

»» Grille LED screen



Fixed

1000*1000mm

Rental

500*500mm / 500*1000mm



Light weight



Seamless splicing



Good light transmittance



lower calorific power



low-energy



Good protective performance

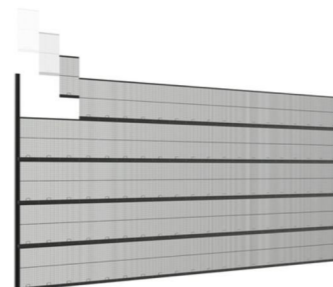
Install the structure



LED Modules
500*125mm

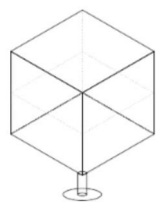


Screen module

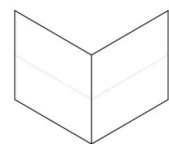


Screen assembly

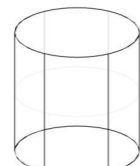
Screen scheme



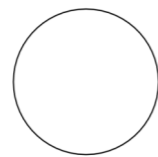
Hexahedral alien screen



Right Angle Alien Screen



Column Alien Screen



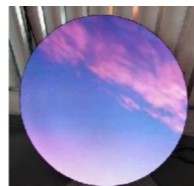
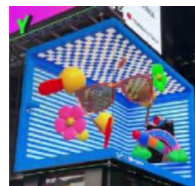
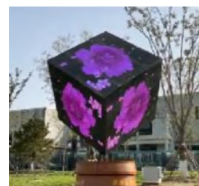
Round Alien Screen



Pyramid alien screen



Subtitle Alien Screen



PRODUCT INTRODUCTION

A-B CHIP

Application



Parameter

Model	PH2.6*5.2	PH3.9*7.8	PH5.2*10.4	PH10.4	PH7.8*15.6	PH15.625
Pitch	2.6*5.2mm	3.978mm	5.2*10.4mm	10.4*10.4mm	7.8*15.6mm	15.625*15.625mm
Density	73920 dots/m ²	32768 dots/m ²	18432 dots/m ²	9216 dots/m ²	8064 dots/m ²	4096 dots/m ²
LED Type	SMD1921				SMD2727/3535	
Screen Size	Module500*125mm Cabinet1000*500mm	Module500*125mm Cabinet1000*500mm	Module100*200mm Cabinet1000*500mm Cabinet1000*1000mm	Module500*125mm Cabinet1000*500mm Cabinet1000*1000mm	Module1000*125mm Cabinet1000*1000mm	
Module Resolution	240 - 800W/m ²					
Protection Degree	IP66	IP66	IP65	IP66		
Screen Transparency	>50%	>55%		>60%	>45%	>60%
Screen weight	<12kg/m ²					
Operating Voltage	220V±10% ; AC50Hz , 3Phase 5wire					
Brightness	800-4000CD/m ²					
Best Viewing Distance	≥6m	≥7.8m	≥6m		≥16m	
Driving mode	1/8Scan	1/6Scan	1/4Scan	1/2Scan		Statis
Viewing Angle	H:160° V:160°					
Refresh Rate	3840Hz / 7680Hz					
Color Temperature	5500K~15000K (Adjuststable)					
Display Thickness	6.5cm			8cm		
Operating Voltage	110V / 220V					
Working Environment	Work environment:-10°C ~ +65°C , 10%~90%RH ; Storage environmen: -40°C ~ +85°C , 10%~90%RH					
Lifetime	100000H					
Customized Solutions	Non-standard specifications can be customized					